

RURAL SPECIAL IMPROVEMENT DISTRICT NO. 580

RESOLUTION

The following resolution was introduced by Commissioner McClintock, who moved its adoption, and it was seconded by Commissioner Christensen, and was unanimously passed and adopted as follows:

A RESOLUTION creating Rural Special Improvement District No. 580, being a thickly populated district in Yellowstone County, Montana, designating the boundaries thereof as designated and defined in the Resolution of Intention heretofore passed and adopted by the Board of County Commissioners of said County on the 25th day of March, 1976, which said Resolution of Intention, now on file in the office of the County Clerk and Recorder of said County, declared it to be the intention of said Board of County Commissioners to create Rural Special Improvement District No. 580.

WHEREAS, the Board of County Commissioners of said County having been presented with a request of Waiver of Protest Hearing by all of the individuals owning property within the proposed District, that the Board of County Commissioners hereby dispenses with the requirement of a formal protest hearing, and hereby issues a Resolution of Intention.

NOW, THEREFORE, BE IT HEREBY RESOLVED by the Board of County Commissioners of Yellowstone County, Montana, as follows:

1. That the Board of County Commissioners has acquired jurisdiction for ordering the proposed district, and there is hereby created a Rural Special Improvement District described as Rural Special Improvement District No. 580 in Yellowstone County, Montana; that the general character and purpose of the improvements to be made in said district are as follows:

(2) That the boundaries of said Rural Special Improvement District No. 580 shall be, and the same are hereby declared to be, the same as described and set forth in the aforesaid Resolution of Intention on file in the office of the County Clerk of said Yellowstone County, to which reference is hereby made for a particular description of said boundaries.

(3) That the costs of said Rural Special Improvement District No. 580, shall be, and the same are hereby declared to be, the same as set forth in the Resolution of Intention with the maximum County participation to be the same as set forth in said Resolution of Intention. Said costs will be paid over a ten (10) year period of time. The entire costs and expenses of making said improvements shall be paid for by said entire district, each lot or parcel of land within said district to be assessed for that portion of the whole costs, which its area bears to the total area of the entire district, exclusive of streets, avenues, alleys and public places, and the Commissioners declare the entire district is benefited by said improvements and shall be assessed accordingly to pay the costs and expenses thereof.

PASSED BY the Board of County Commissioners of Yellowstone County, Montana, and approved by its chairman this 25th day of May, 1975⁶.

APPROVED:



Chairman of the Board of County Commissioners, Yellowstone County, Montana

Merrill H. Klundt
County Clerk & Recorder
By Dorothy de Graff
Deputy

GENERAL CHARACTER OF
IMPROVEMENTS

EASTRIDGE ESTATES SUBDIVISION

The general character of improvements to be made is to provide for the installation of a water distribution system with service lines, and asphalt street improvements, to be located within Maier Road, Lantana Drive, Suburban Drive, Rolling Meadows Drive and Cedar Canyon Road of Eastridge Estates Subdivision and connection to the existing water main in U. S. Highway No. 87. The County of Yellowstone agrees to install the base gravel in place in the amount of 4,950 cubic yards.

EXHIBIT A

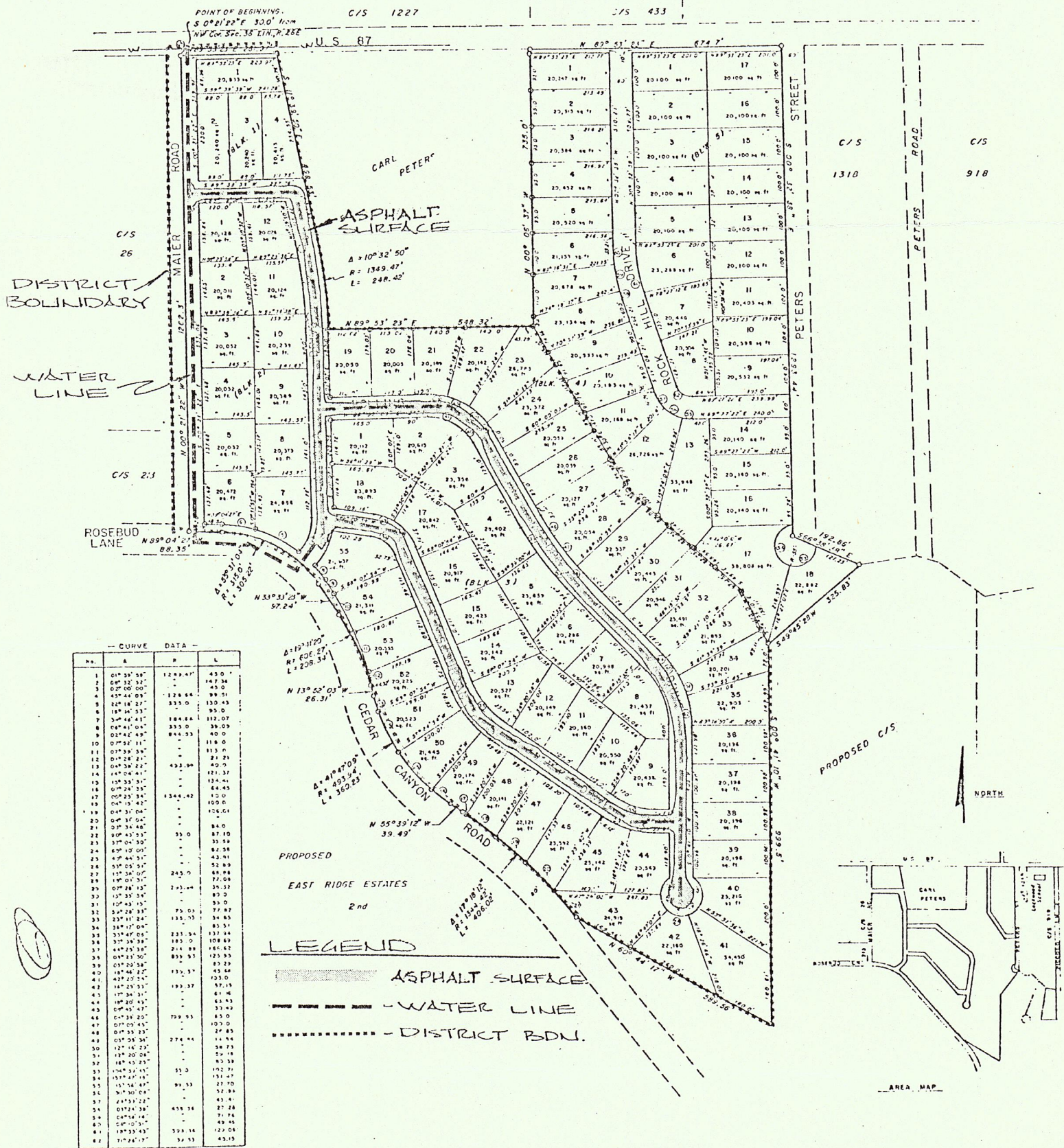
EAST RIDGE ESTATES SUBDIVISION

in W² Sec. 36, T.1N., R.26E., P.M.M.

Yellowstone County, Montana

by : Harlan M. Lund 1827-S

April, 1974



ABSTRACT GUARANTY COMPANY

WHILE THIS IS A PHOTOGRAPHIC REPRODUCTION OF THE RECORDED PLAT, THE COMPANY ASSUMES NO LIABILITY FOR VARIATIONS, IF ANY, WITH A RE-SURVEY.

EXHIBIT B

BOUNDARY DESCRIPTION

R.S.I.D. # _____

EAST RIDGE ESTATES SUBDIVISION

UTILITY AND STREET IMPROVEMENTS

Beginning at a point at the extension of the west right-of-way line of Maier Road and the north line of Section 36, T.1N., R.26E., P.M.M., Yellowstone County, Montana; thence Northeasterly on and along said north section line to a point at the extension of the east line of Lot 1, Block 1 Eastridge Estates Subdivision; thence Southeasterly on and along the easterly line of Block 1, Eastridge Estates Subdivision and the easterly right-of-way line of Lantana Drive to the northwest corner of Lot 19, Block 4 Eastridge Estates Subdivision; thence Northeasterly to the northeasterly corner of Lot 23, Block 4, Eastridge Estates Subdivision; thence Southeasterly to a point on the north line of Lot 28, Block 4 Eastridge Estates Subdivision; thence Southeasterly to the northeast corner of Lot 32, Block 4 Eastridge Estates Subdivision; thence Southeasterly to a point on the east line of Eastridge Estates Subdivision; thence Southwesterly to the south corner of Lot 41, Block 4 Eastridge Estates Subdivision; thence Northwesterly to a point on the southwesterly line of Lot 43, Block 4 Eastridge Estates Subdivision; thence Northwesterly to a point at the extension of the west right-of-way line of Maier Road; thence Northwesterly on and along said west right-of-way line to the Point of Beginning. R.S.I.D. # _____ contains 1,523,872 square feet.

EXHIBIT B

RURAL SPECIAL IMPROVEMENT DISTRICT #

EASTRIDGE SUBDIVISION

DESCRIPTION AND ESTIMATED QUANTITY OF IMPROVEMENTS

WATER SYSTEM

<u>Description</u>	<u>Approximate Quantity</u>
8" water line	1620 l.f.
6" water line	4800 l.f.
8" fittings	7 ea.
6" fittings	30 ea.
8" valves	2 ea.
6" valves	15 ea.
6" fire hydrants	7 ea.
Services	70 ea.
Connection to existing 8" main	1 L.S.

STREET IMPROVEMENTS

<u>Description</u>	<u>Approximate Quantity</u>
Excavation	2450 cu.yd.
Base Course	4950 cu.yd.
Level course	510 cu.yd.
Culvert (12" CMP)	182 l.f.
Rip rap	30 cu.yd.
Street sign	6 ea.
Prime oil	14 Ton
Asphalt Surface Course	1300 Ton
Asphalt Mix Oil	78 Ton

EXHIBIT C